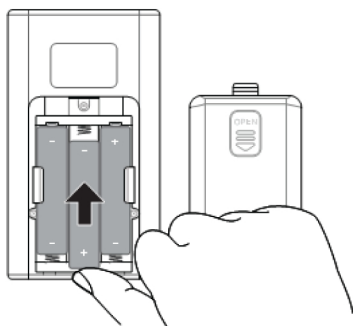


QUICK REFERENCE GUIDE

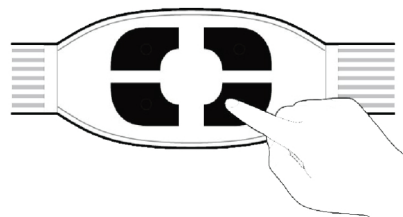


IMPORTANT: Steps 1-4 should be performed with the device turned OFF. Once the iReliev™ unit has been turned ON, do not remove electrodes without first turning OFF the unit.

Step 1. Insert 3 AAA batteries, taking care to match up the symbols.



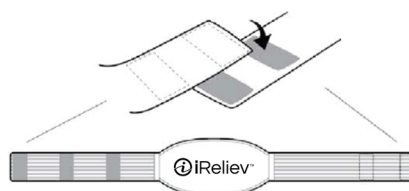
Step 2. Before use, dampen the integrated silicon electrodes with water.



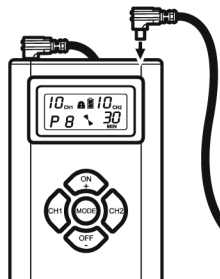
Step 3. Correctly position the Conductive Back Wrap around the area to be treated. Adjust the Wrap so it fits comfortably.



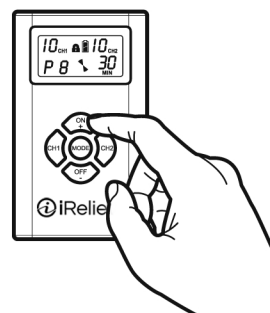
Step 4. The belt may be tightened or loosened as shown by adjusting the hook and loop closure.



Step 5. Attach the connector plugs on the Conductive Back Wrap into the sockets at the top of the unit.



Step 6. Turn on the unit. Select your treatment program, timer and intensity level.



When you are familiar with the operation of your iReliev™ device, use the following steps as a quick reference guide to operate.

For more information, refer to the Operating & Instruction Manual

WARNING:

- ☒ Do not use this system if you have cardiac pacemaker, implant defibrillator or any other implanted metallic/electronic device.
 - ☒ If pregnant, consult a physician prior to use.
 - ☒ Do not use the iReliev™ system if you have undiag-nosed chronic pain.
- DO NOT TOUCH ELECTRODE (S) AFTER TURNING ON**